

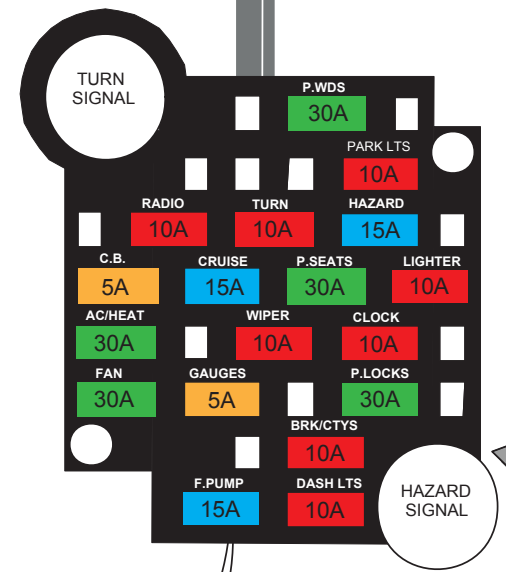
Fuse Panel Installation Instructions

Following these simple instructions will guarantee a successful installation of your American Autowire Fuse Panel Harness.

The order of installation will be as follows:

1. Install the fuse box and mounting plate.
2. Route fuse panel harness in dash area.
3. Make all dash connections as shown in this Fuse Panel Installation sheet.
4. Starting with bag "H", install all other wiring bags as per the letter designation on instruction sheets. (bags H,J,K,L,M).

Let's begin your installation of this Fuse Panel harness. Study the diagram above, and follow the installation procedures on the following pages!



Fuse panel
SEE SHEET 2

RECOMMENDED FUSE CIRCUIT RATINGS			
PARK LIGHTS	10 AMP	CRUISE	15 AMP
HAZARD	15 AMP	CLOCK	10 AMP
BRAKE LIGHTS	10 AMP	LIGHTER	10 AMP
DASH LIGHTS	10 AMP	FUEL PUMP	15 AMP
TURN SIGNAL	10 AMP	POWER SEAT	30 AMP
WIPER	10 AMP	POWER LOCK	30 AMP
GAUGE	5 AMP	POWER WINDOWS	30 AMP
C.B. RADIO	5 AMP		
A/C / HEATER	30 AMP		
RADIO	10 AMP		
FAN	30 AMP		

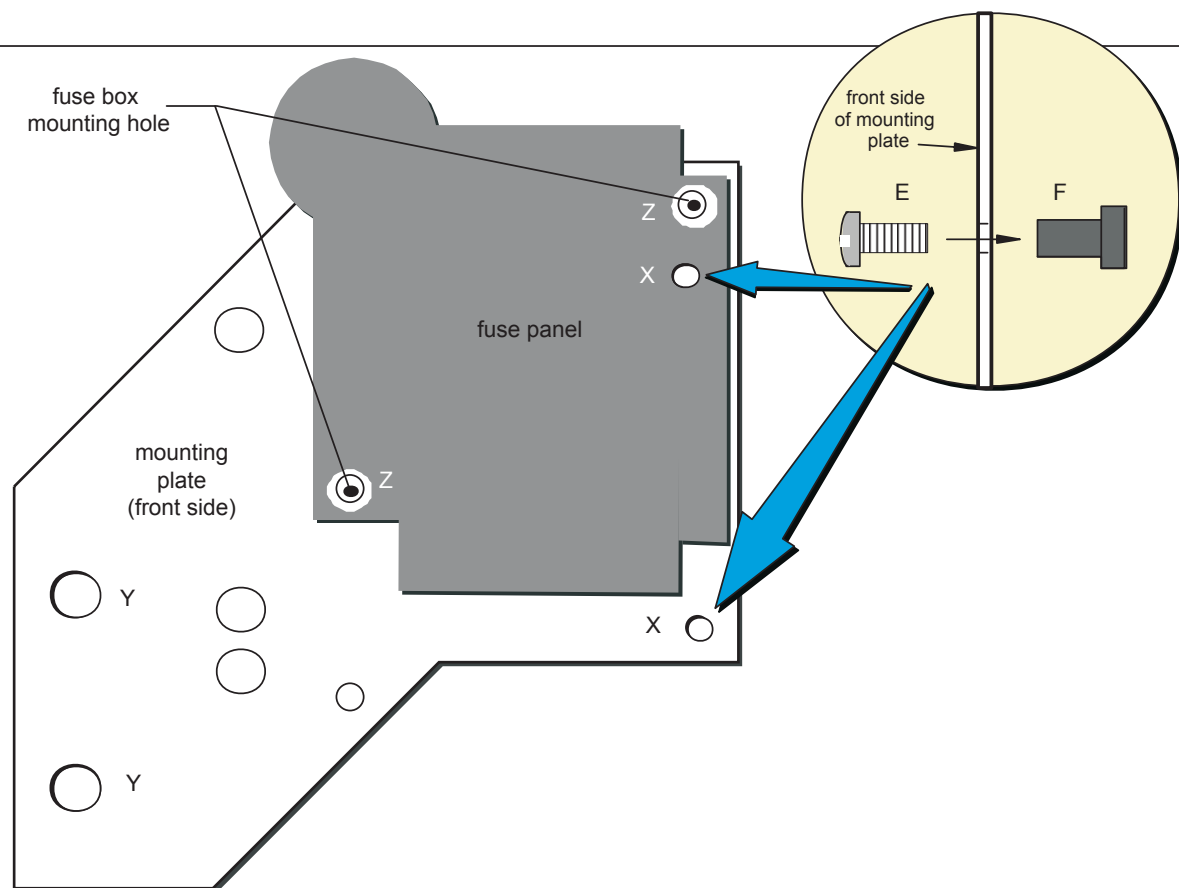


www.americanautowire.com 856-933-0801

PART # **500465** **G**

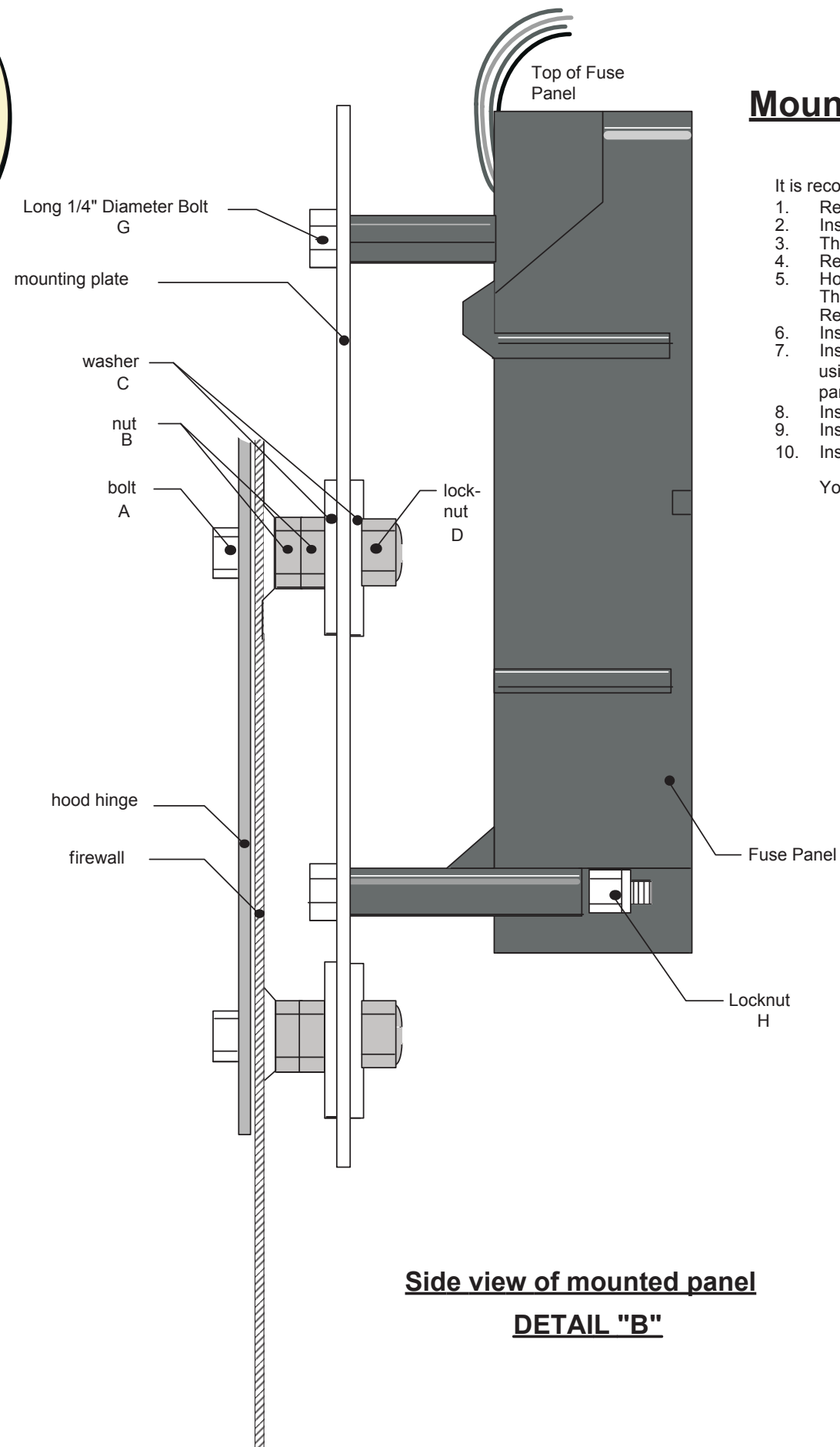
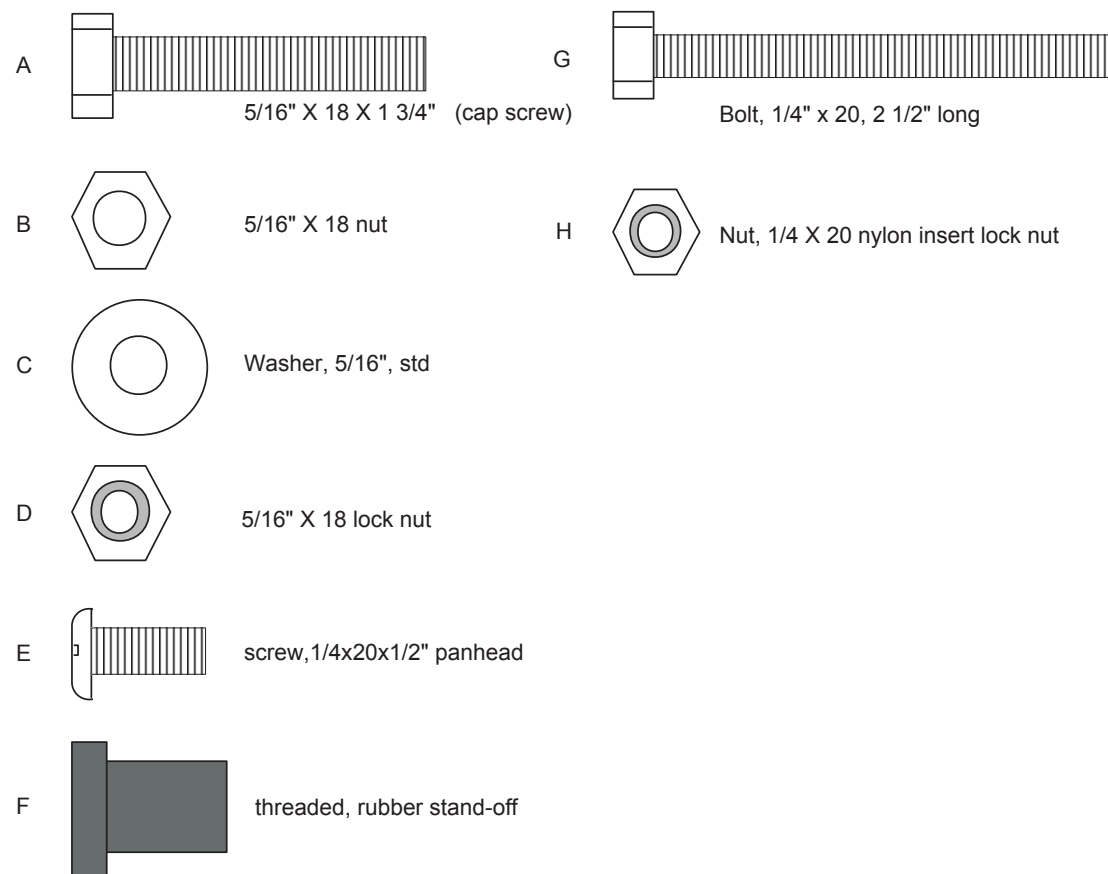
DESCRIPTION:
1947-55 Chevy/GMC Truck
 Custom Fuse Panel Harness
 92965204 Rev.6.0 6/12/2014 JM

Dimmer Switch
SEE SHEET 3



View from inside of firewall

DETAIL "A"



Side view of mounted panel

DETAIL "B"

Mounting Fuse Panel and mounting plate

It is recommended that the hood hinge bolts be replaced one at a time as follows:

1. Remove the upper driver-side, hood hinge spring bracket bolt from the firewall.
2. Install bolt "A" into the existing hood hinge spring bracket bolt hole.
3. Thread on 2 nuts "B" on each of bolt "A", as shown in detail "B".
4. Repeat for lower hinge bolt.
5. Holding the mounting plate as shown in detail "A", insert screw "E" into hole "X". Thread rubber standoff "F" onto screw "E", as shown. Repeat this procedure for the other hole marked "X".
6. Insert 2 bolts "G" into holes "Z", as shown in details "A"&"B".
7. Install fuse panel onto bolts "G", and secure using lock-nuts "H" (This is best done using a 1/4" drive, 6 point deep well socket and extension). Be sure to mount fuse panel as shown in detail "A"&"B", with the wires exiting the top of the fuse panel.
8. Install washer "C" on each bolt "A".
9. Install mounting plate assembly onto bolts "A", using holes "Y".
10. Install washer "C" and lock nut "D" to complete the plate installation.

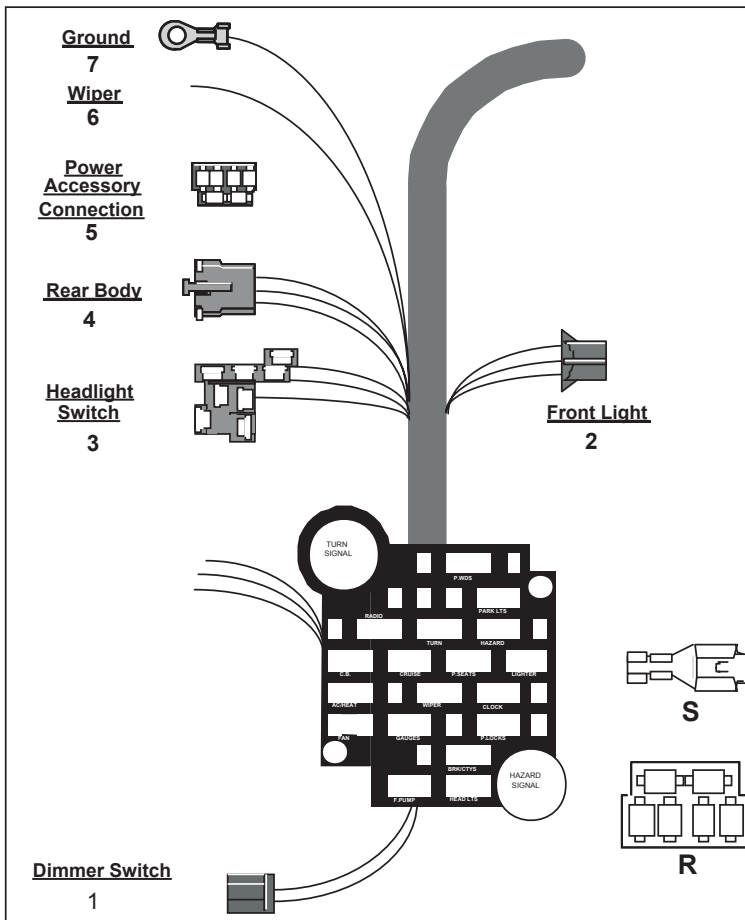
Your fuse panel is now installed!



www.americanautowire.com 856-933-0801

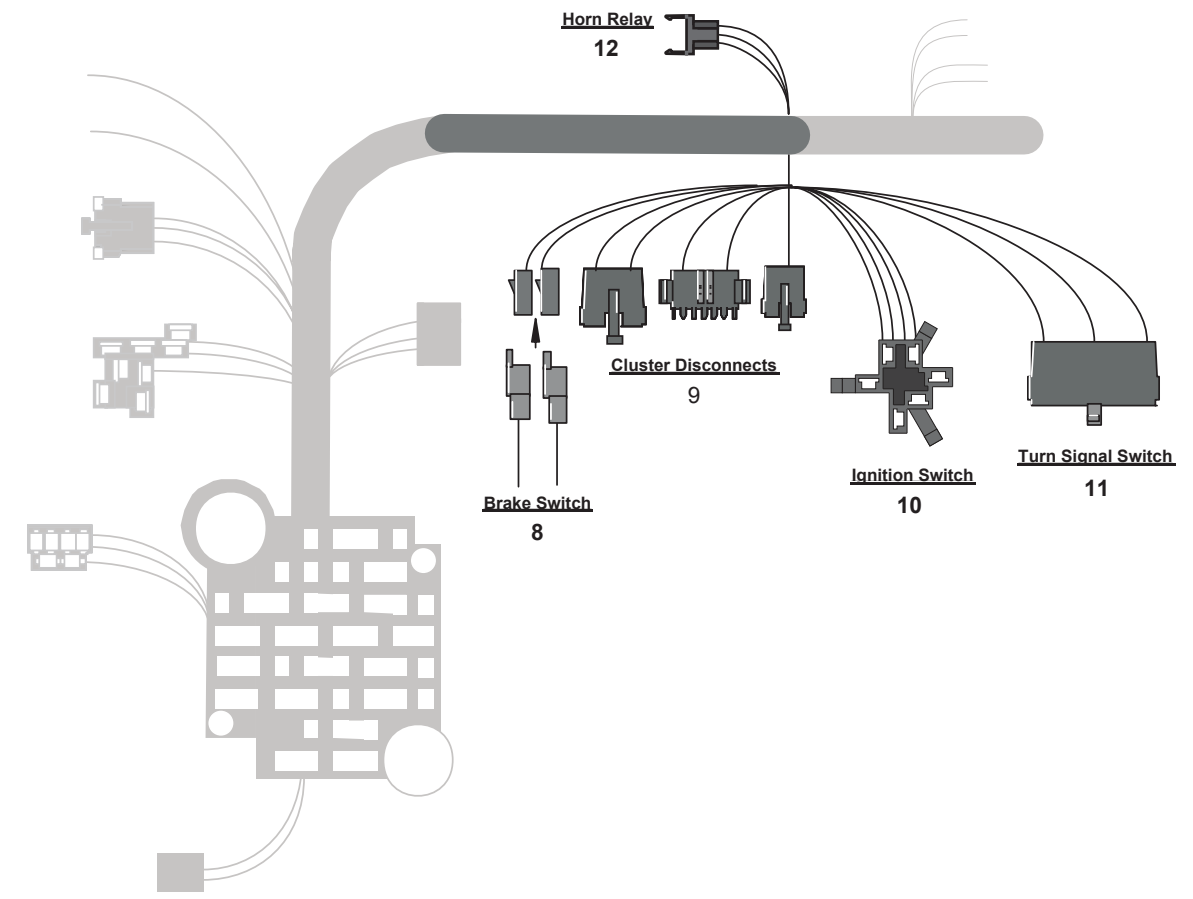
1947-55 Truck
Custom Fuse Panel Harness **500465**

92965204 Rev 6.0 6/12/2014 JM



Note: Terminals are provided for most connections on your wiring kit. Use the provided terminals and connectors to install the following wires:

1	DIMMER SWITCH	Yellow Tan Lt Green	12 volt feed to dimmer switch Lo beam feed from dimmer switch Hi Beam feed from dimmer switch	
2	FRONT LIGHT	Tan Light Green Brown Light Blue Dark Blue Dark Green Orange	Lo beam feed to headlight bulb Hi beam feed to headlight bulb Parking lamp feed to parking lamps LH turn feed RH turn feed Horn feed Electric fan feed	
3	HEADLIGHT SWITCH	Red Orange Brown Yellow Gray White	12 volt feed to switch 12 volt feed "in" to park/tail Park / tail feed "out" Dimmer feed Instrument lamp feed Dome / courtesy ground	"BAT" location on headlight switch "PARK / TAIL FEED IN" location on headlight switch. (commonly found on GM headlight switches) "PARK / TAIL FEED OUT" location on headlight switch. "DIMMER FEED" location on headlight switch. "INSTRUMENT LAMP" location on headlight switch. "GROUND" location on headlight switch.
4	REAR BODY	Tan Brown Yellow Dark Green Orange White Light Green Light Blue	Fuel tank sender lead Tail lamp feed LH turn / brake feed RH turn / brake feed Dome / courtesy lamp feed Dome / courtesy lamp ground Back up lamp feed Third brake lamp feed	This connector will mate to the connector from the Rear Body Intermediate harness found in bag M.
5	POWER ACCESSORIES	Dark Blue Orange Red Pink Yellow Tan	Fused 12 volt ignition feed for fuel pump (may also be used to feed power to another accessory circuit) Fused 12 volt battery feed for power seats (may also be used to feed power to another accessory circuit) Fused 12 volt battery feed for power door locks (may also be used to feed power to another accessory circuit) Fused 12 volt ignition feed for cruise control (may also be used to feed power to another accessory circuit) Fused 12 volt battery feed for power windows (may also be used to feed power to another accessory circuit) Fused 12 volt ignition CB radio feed (may also be used to feed power to another accessory circuit)	Use the provided connector R and terminals S if you wish to connect to the accessory connector.
6	WIPER	White	This is a 12 volt feed wire for the wiper circuit. For an aftermarket wiper system, consult wiper manufacturer for proper hook up. All functions of this motor are controlled by the wiper switch, which activates functions by a ground circuit.	
7	GROUND	Black	This wire is the ground for the instrument cluster. Connect it to a good chassis ground.	



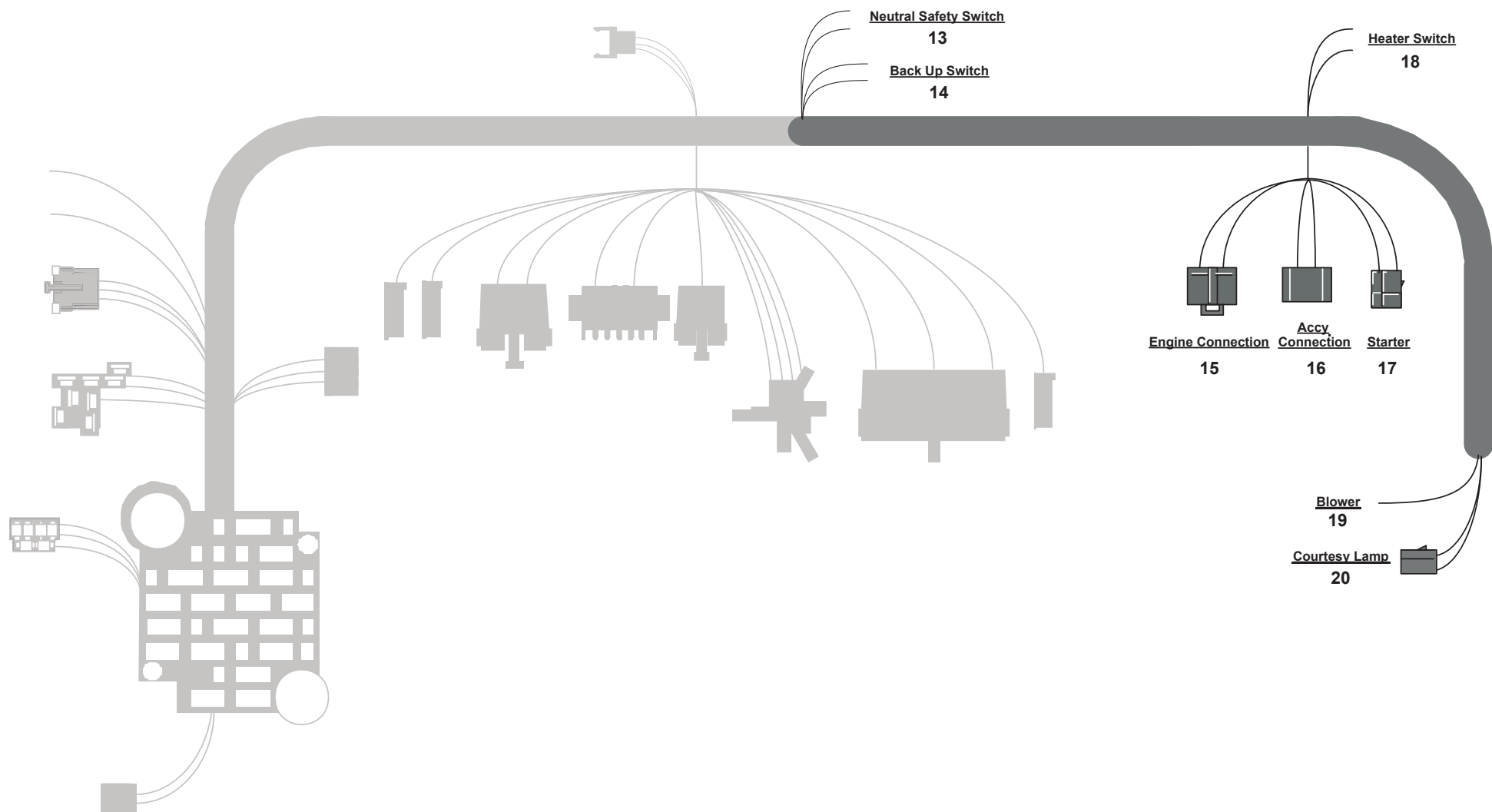
Note: Terminals are provided for most connections on your wiring kit. Use the provided terminals and connector to install the following wires:

8	BRAKE SWITCH	Orange White Light Blue	12 volt feed to brake switch 12 volt "out" from brake switch to turn signal switch. 12 volt "out" from brake switch to third brake light.	
9	GAUGE DISCONNECT		These connectors will plug into the gauge disconnect from the Cluster harness, bag H. Each wire function is described on the instruction sheet from bag H.	
10	IGNITION SWITCH	Red Pink Purple Brown	12 volt battery feed to switch 12 volt ignition feed from ignition switch to fuse panel Starter solenoid feed wire Accessory feed wire from ignition switch to fuse panel	
11	TURN SIGNAL SWITCH	White Dark Green Yellow Purple Brown Dark Blue Light Blue Black	12 volt feed from brake switch RH tail lamp LH tail lamp 12 volt feed from turn flasher 12 volt feed from hazard flasher RH front park lamp LH front park lamp Horn relay ground wire to horn switch	Plug into steering column turn signal connection. If you are using a stock '47-'55 truck steering column in your truck, please refer to "Table A - AAW Turn Signal Switch wires to stock 1947-55 Chevy & GMC Truck turn signal switch" on page 4, for proper mating directions. Our connector mates to a 3 7/8 inch long plug used on 1969-1974 GM, IDIDIT, and many other aftermarket steering columns. Starting from 1975 on up, the GM switch changed and began using a 4 1/4 inch connector. That connector is from the same family and uses the same terminals. By using the supplied mating connector and terminals located in the loose piece kit bag of the dash harness (500465, bag G), it is easy to adapt any steering column to this kit. The function of the wires are as follows:
12	HORN RELAY	Red Black Dark Green	12V Battery feed to the Horn Relay Relay ground circuit (to the steering column) Feed to the Horns	



www.americanautowire.com 856-933-0801

1947-55 Truck
Custom Fuse Panel Harness 500465
 92965204 Rev 6.0 6/12/2014 JM

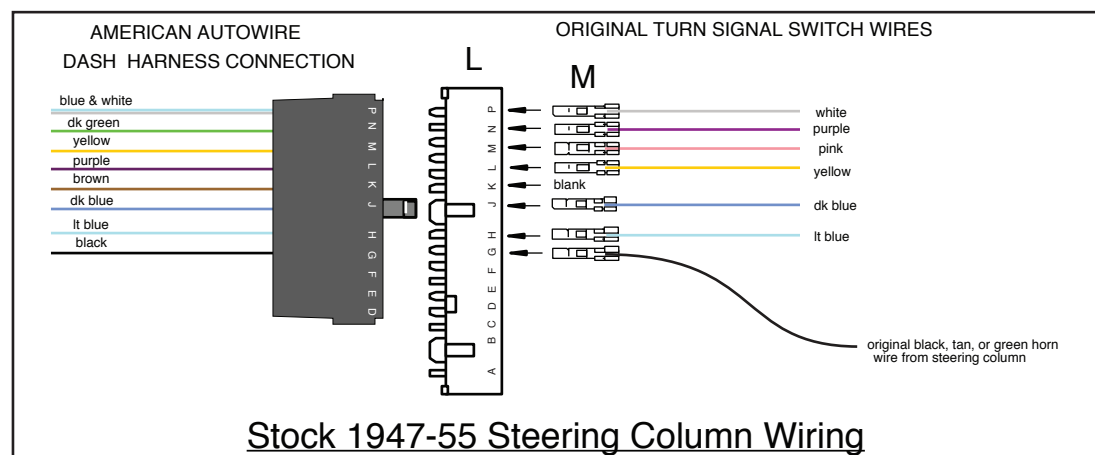


“Table A” AAW Turn Signal Switch wires to stock 1947-55 Chevy & GMC Truck turn signal switch.

AAW Wire #	AAW Wire color	AAW Wire Printing	Stock Truck Wire Color
14A,B	Light Blue	Left Front Turn	Light Blue
15A,B	Dark Blue	Right Front Turn	Dark Blue
16B	Purple	Turn Switch Feed	Yellow
17A,B	Blue & White	Brake Switch	White
18	Yellow	Left Rear Turn	Pink
19	Dark Green	Right Rear Turn	Purple
27B	Brown	Turn Sw - Hazard	Not applicable
28	Black	Horn Relay Ground	Black, Tan, or Dk. Green

NOTE: The stock 1947-55 Truck turn signal switches did not have a horn ground wire located in them. That wire was a separate wire that was attached to the steering column upper mast jacket bushing and came out through an opening in the steering column. That wire was typically black, tan, or dark green and had a small male blade crimped onto it. If you are using the factory steering column in your car, crimp one of the loose piece terminals “M” found in the loose piece kit of the 500465 dash harness onto that wire, and plug it into the adapter “L” when building your turn signal switch adapter to complete the horn ground circuit.

- Note: Terminals are provided for most connections on your wiring kit. Use the provided terminals and connector to install the following wires:**
- 13 NEUTRAL SAFETY** Purple
Purple
12 volt feed from ignition switch
12 volt feed to starter (These wires **MUST** be connected to a neutral safety switch for an automatic transmission, or connected together for a manual transmission car, for the starter to operate correctly.)
 - 14 BACK UP SWITCH** Pink
Light Green
12 volt ignition power to switch
12 volt power out to back up lights, from switch.
 - 15 ENGINE CONNECTION**
This connector will plug into the mating connector on the Engine harness, bag J. Wire identifications are described on the Instruction sheets from bag J.
 - 16 ACCY CONNECTOR**
This connector can be used for many different functions. Supplied in this kit is a mating connector with terminated wires for your use. Install the wires maintaining color continuity with the wires on our harness. We recommend the following:
Red Cigarette lighter - fused battery.
Yellow Radio 12 volt - fused battery.
Orange Glove box - fused battery.
Grey Heater control lamp - fused battery.
Tan Radio 12 volt fused accessory.
 - 17 STARTER CONNECTION**
This connector will plug into the mating connector from the Engine harness, bag J.
 - 18 HEATER SWITCH** Brown
Orange
Fused 12 volt feed to heater / ac switch
12 volt power from heater / ac switch to blower
 - 19 BLOWER** Orange
Feed from heater / ac switch to blower
 - 20 COURTESY LAMP**
White
Orange
This connector plugs into the mating connector for the courtesy lamp kit 500472. (Bag N)
Dome / courtesy lamp ground, to door jamb switch
12 volt battery feed to courtesy lamp.



www.americanautowire.com 856-933-0801

1947-55 Truck
Custom Fuse Panel Harness 500465

92965204 Rev 6.0 6/12/2014 JM