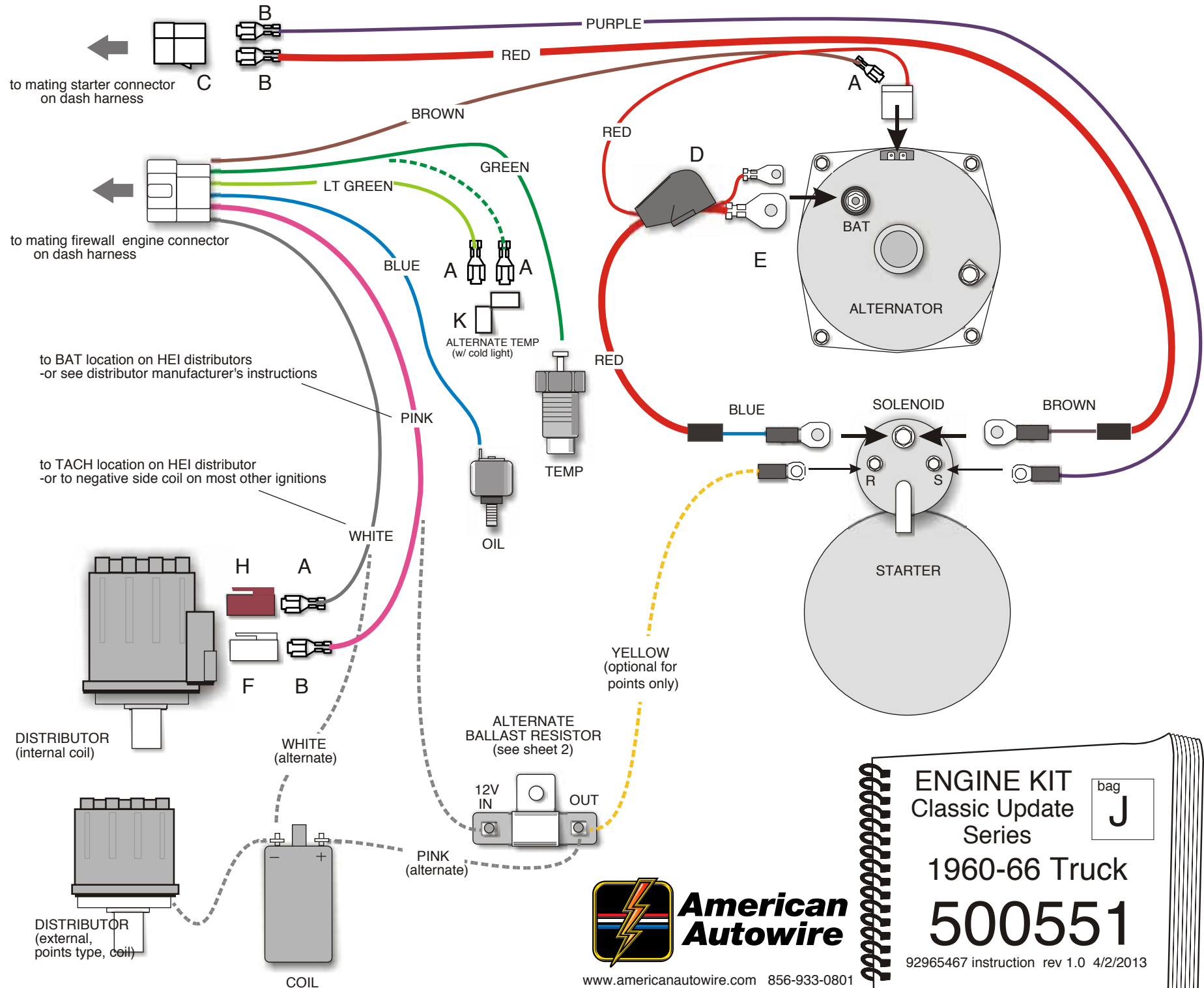


Classic Update Series



ENGINE KIT bag J

Classic Update Series

1960-66 Truck

500551

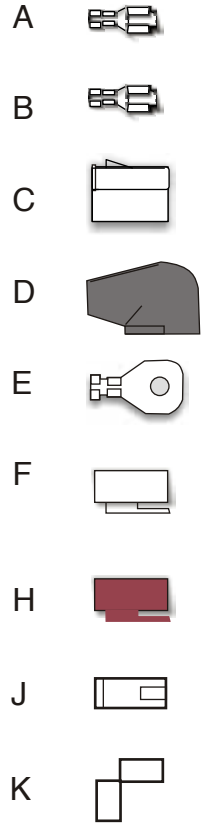
92965467 instruction rev 1.0 4/2/2013



American Autowire

www.americanautowire.com 856-933-0801

LOOSE PIECE WIRES



PURPLE	Starter solenoid feed	Connect this to the "s" terminal on the starter solenoid. Route the other end to the dash harness starter connector and trim to length. Install terminal B and connector C, maintaining color continuity with the mating connector.
RED (heavy w/ brown fuse link wire)	Main power feed	Connect this wire to the battery stud on the starter solenoid and route to the dash harness starter connector and trim to length. Install terminal B and plug into connector C, from the above wire.
RED (heavy w/ blue fuse link wire)	Alternator lead	Connect this wire to the battery stud on the starter solenoid, and route the other end to the alternator. Cut this wire to length and install boot D and ring terminal E. If you are using a one wire alternator, connect this wire to the battery stud on the alternator. If you are using a GM 'SI' series alternator, follow the directions on the next wire.
YELLOW	Starter bypass	If you are using any points type ignition system requiring a 12V bypass on the crank cycle, connect this wire from the "R" terminal on the starter to the output side of the ballast resistor.
RED (small)	Regulator lead	If you are using an after market one wire alternator, this wire is not used. If using a GM 'SI' series alternator, route the ring terminal on this wire through the same rubber boot D in the step above, and connect both red wires to the battery stud on the alternator. Do not plug this wire into the alternator until the next step.
WIRES FROM MAIN CONNECTOR		
Plug the main 6 position connector into the mating engine connector on the dash harness, at the firewall.		
BROWN	Regulator exciter	If you are using an after market one wire alternator, this wire is not used. On GM 'SI' series alternators, route this wire to the alternator and trim to length. Install female terminal A and plug this wire into the empty cavity of the regulator connector from the small red wire above.
DK GREEN	Temperature sender	Connect this wire to the temperature sending unit. Install terminal A and either connector J or K, depending on application. If you are using an original temperature lamp with a "cold" location, see LIGHT GREEN wire below.
LIGHT GREEN	Cold temperature	If you are not using an original 'cold' temperature lamp, this wire will not be used. If you are using an original temperature light, with a "cold" indicator, connect this wire to the temperature sending unit using terminal A and connector K, as shown on sheet 1.
PINK	Ignition feed	If using an ignition system which requires 12 volts, route this to the coil and connect to the + terminal. (Connector F, and terminal B are supplied for the GM HEI). If using an ignition system which requires a ballast resistor, connect this wire to the 'feed in' side of resistor, as shown on sheet 1.
DK BLUE	Oil sender	Connect to the oil sending unit. Terminal A and connector J are supplied for this connection.
WHITE	Tachometer lead	Connect to the -side of coil. (Connector H and terminal A are supplied for HEI distributors)

