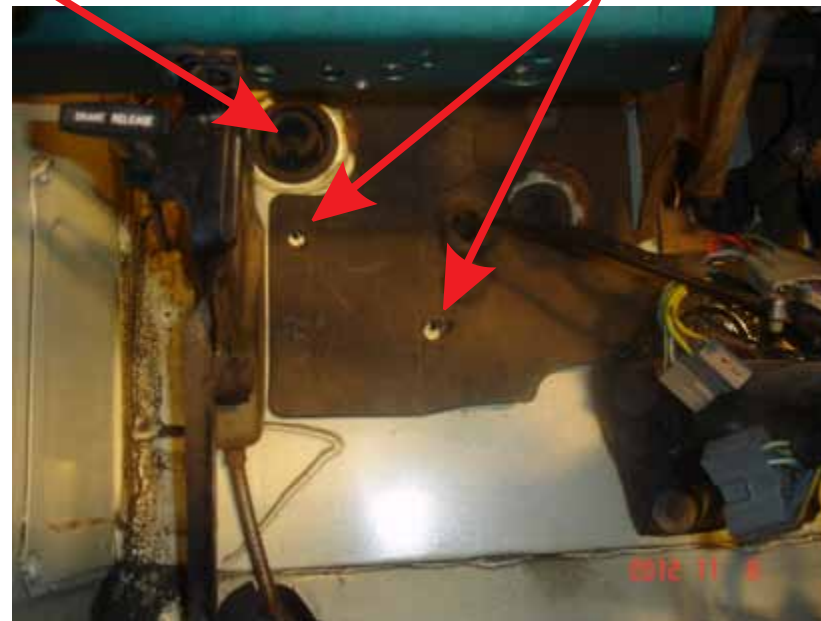


1973 - 1979 Ford Truck Fuse Panel Mounting Instructions

Stock Engine Bay
Harness Hole

Stock Fusebox
Mounting Holes



NEW AAW application

Original application



As Viewed From Under the Dash



NOTE:

1. The installation and placement of your new AAW fusebox is very easy and straightforward. On this page to the upper right, you will find a photograph of the stock firewall with the original fusebox removed exposing the two mounting holes as they were used to mount the original fusebox. No new holes will need to be drilled in your firewall as the new AAW fusebox will mount in the same location as your original, and will utilize the stock mounting holes as well.

2. Be sure to check for clearances of any accessories that you might be adding. The stock clutch and brake pedal assembly pose no concerns at all when mounted in this location. There are 2 mounting holes (1 each) in the new AAW fusebox diagonally opposite of each other in the opposite corners of the fusebox from the flasher cans. 2 new attaching screws have been provided for you to affix the fusebox to the firewall. They can be found in the 510343 loose piece dash kit.

3. Your new AAW dash/main harness is designed to route exactly the same way as your original dash harness did. Once the fusebox has been attached to the firewall of the car, the harness routes up and over top of the pedal carriage assembly and snaps into the two 2" retaining clips (in behind the speedometer assembly), then through the upper dash harness guide/trough and over to the heater box and RH door jamb areas. Please take time to keep it away from any moving items.



**American
Autowire**

www.americanautowire.com 856-933-0801

92970180

92970180 instructions Rev 0.0 11/21/2012